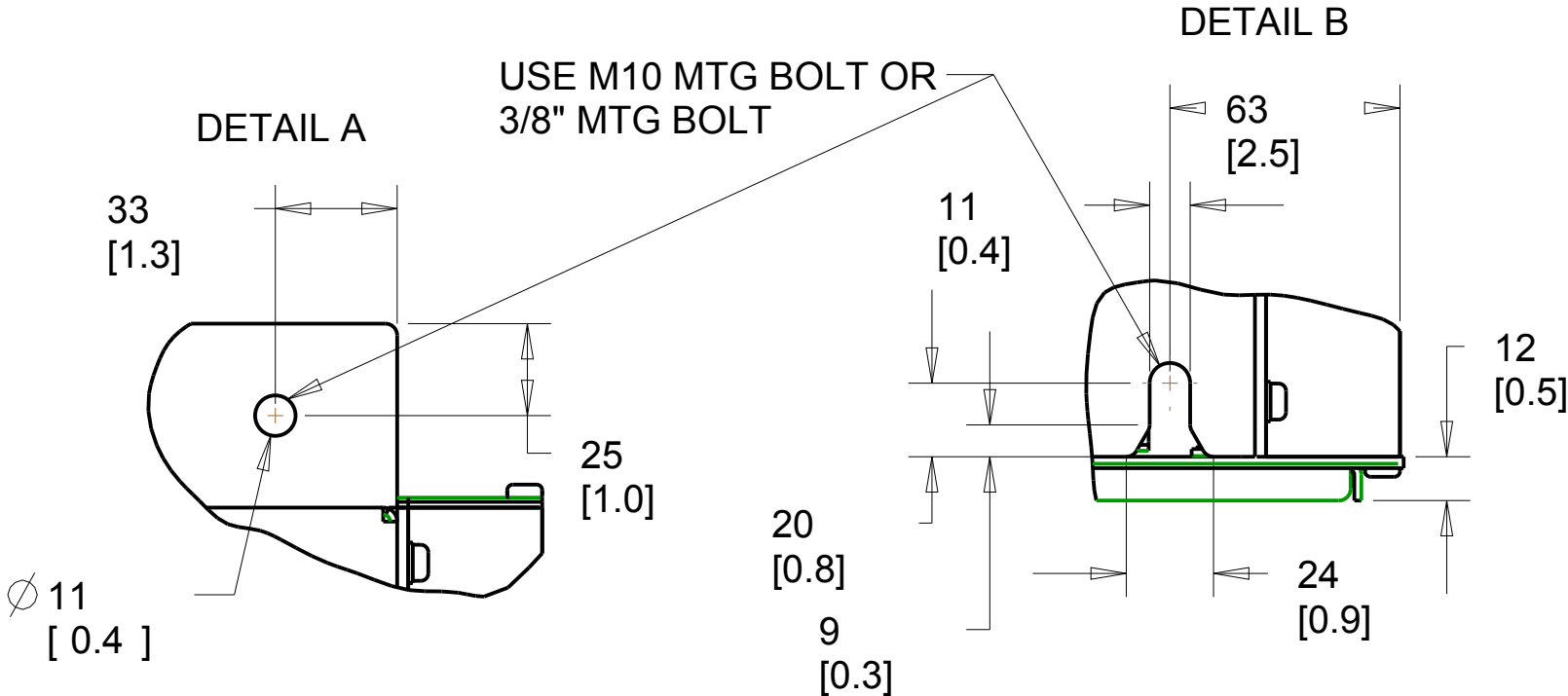
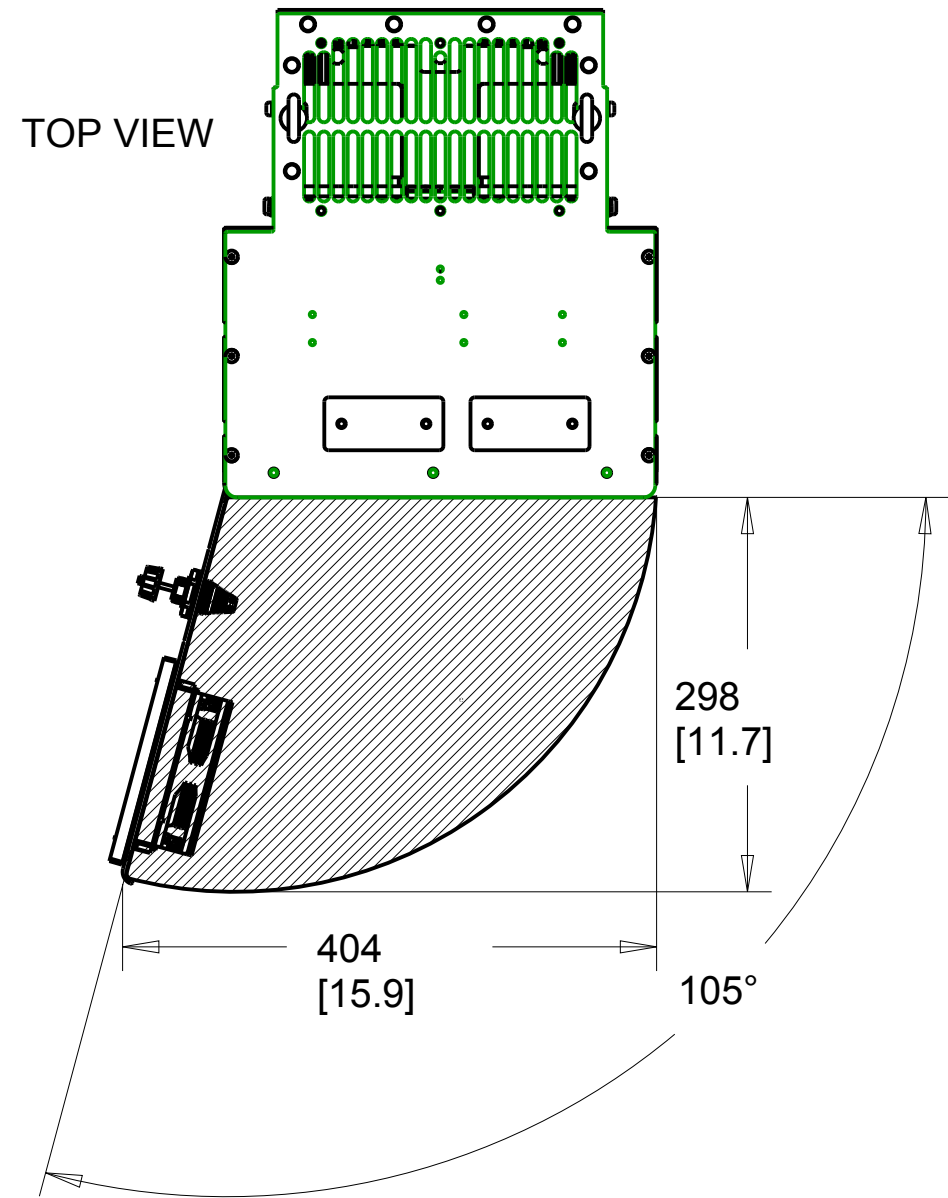
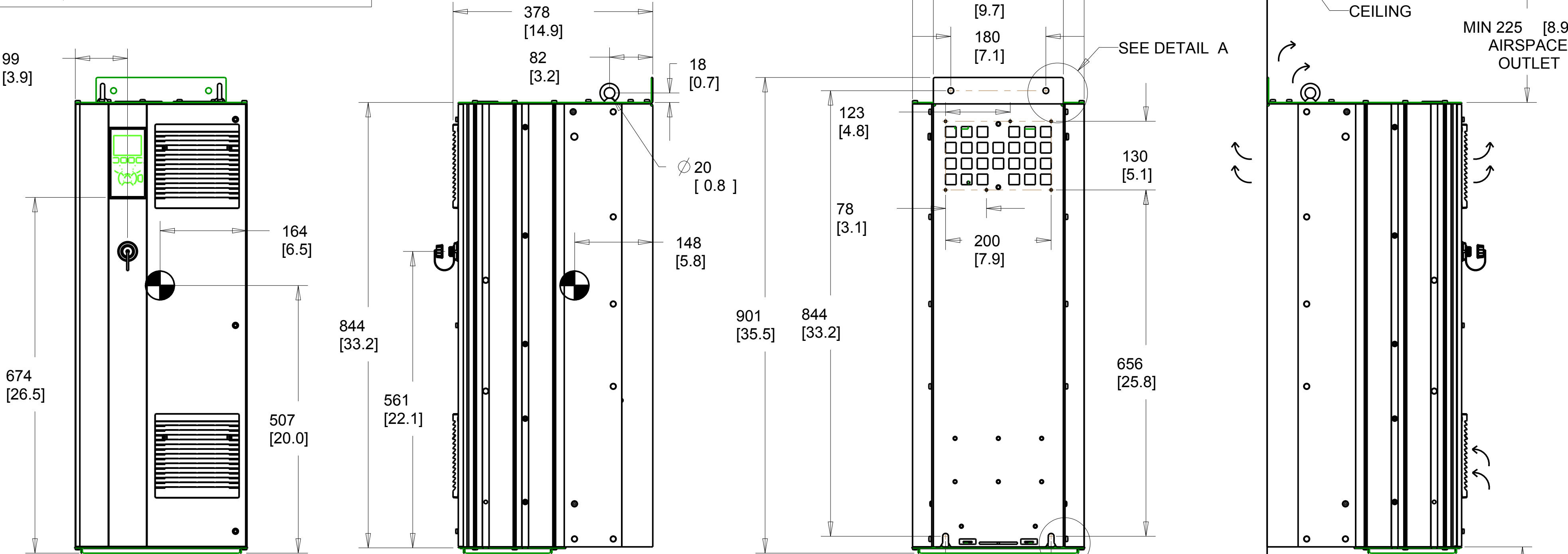


- NOTICE -


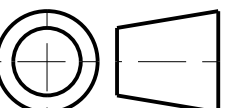
THIS DOCUMENT CONTAINS PROPRIETARY INFORMATION OF DANFOSS DRIVES. IT IS LOANED BY DANFOSS DRIVES SUBJECT TO THE CONDITIONS THAT IT AND THE INFORMATION EMBODIED THEREIN SHALL BE USED ONLY FOR RECORD AND REFERENCE PURPOSES, SHALL NOT BE USED OR CAUSED TO BE USED IN ANY WAY PREJUDICIAL TO THE INTERESTS OF DANFOSS DRIVES, SHALL NOT BE REPRODUCED OR COPIED IN WHOLE OR IN PART OR DISCLOSED TO ANYONE WITHOUT THE DIRECT WRITTEN PERMISSION OF DANFOSS DRIVES, AND SHALL BE RETURNED UPON REQUEST.

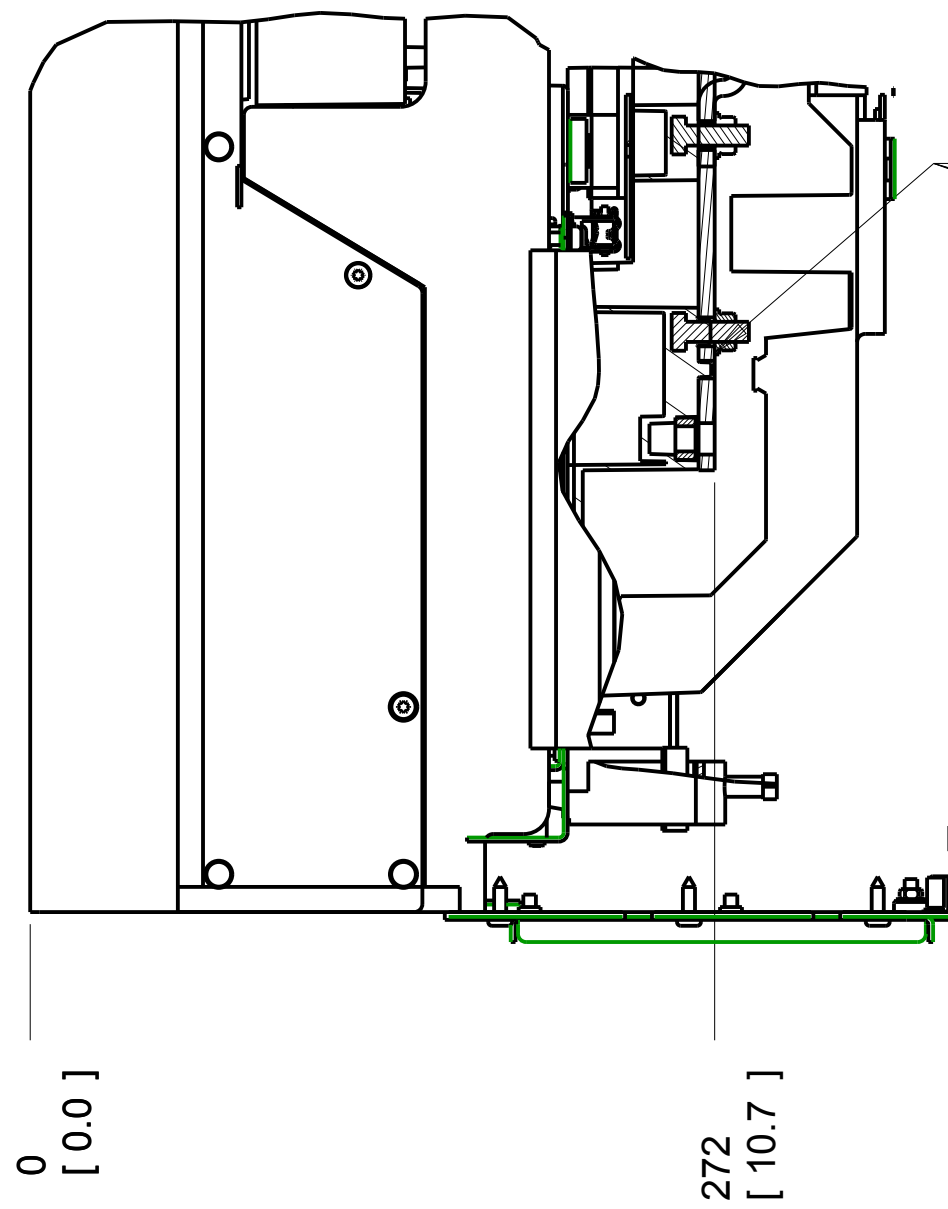
REVISION HISTORY

REV	ECN NUMBER	ENTRY BY	DATE
001	INITIAL RELEASE	PK	01/25/12

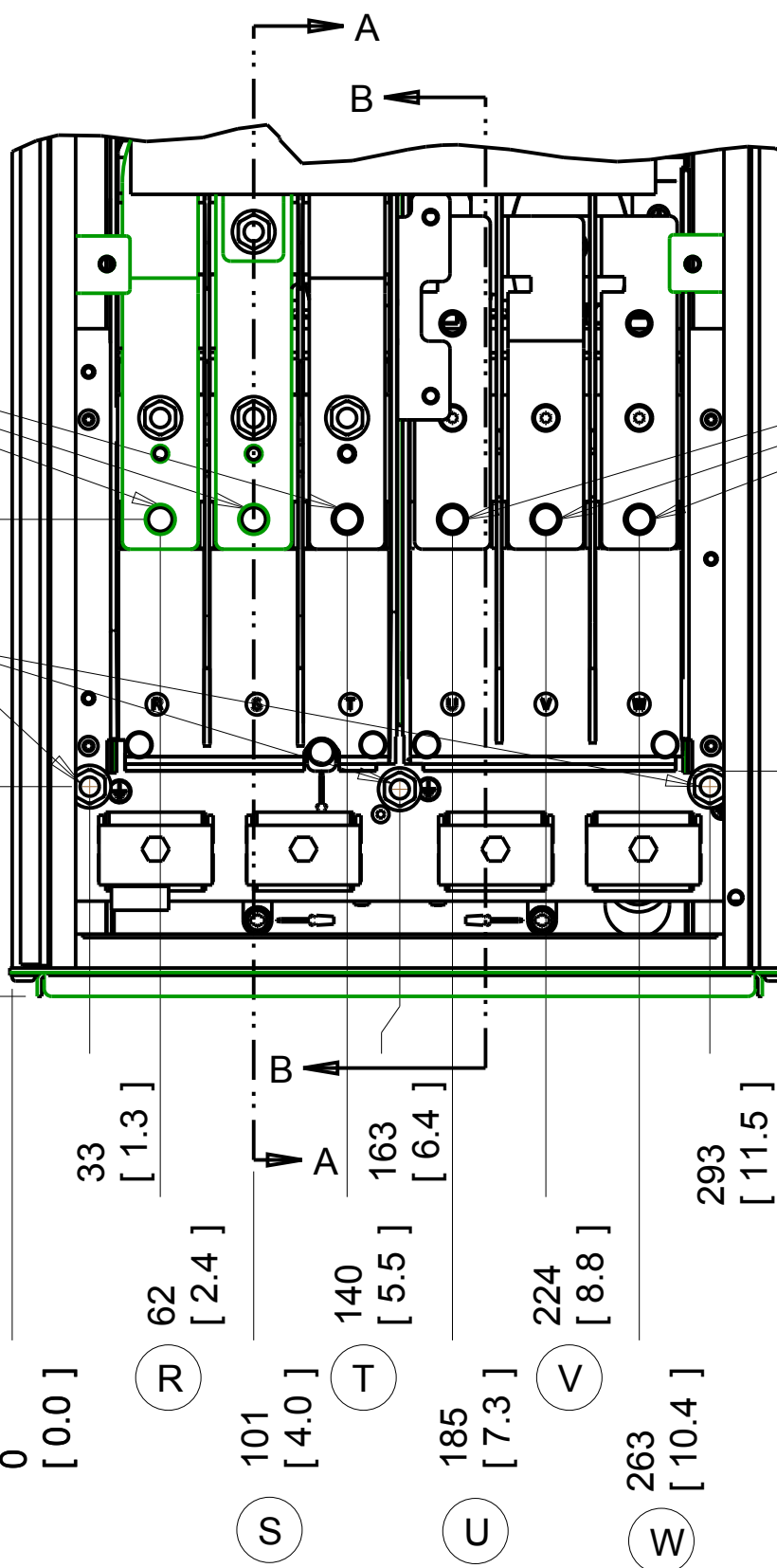


- 1. MAX AIRFLOW (BACKCHANNEL) - 7 M³ / MIN (250 CFM)
- 2. MAX AIRFLOW (CABINET) - 1.7 M³ / MIN (60 CFM)
- 3. MAX WEIGHT = 62 KG (135 LBS)
- 4. CENTER OF GRAVITY:
APPROXIMATE LOCATION ONLY, LOCATION MAY VARY BASED ON POWER RATING AND OPTIONS ORDERED.

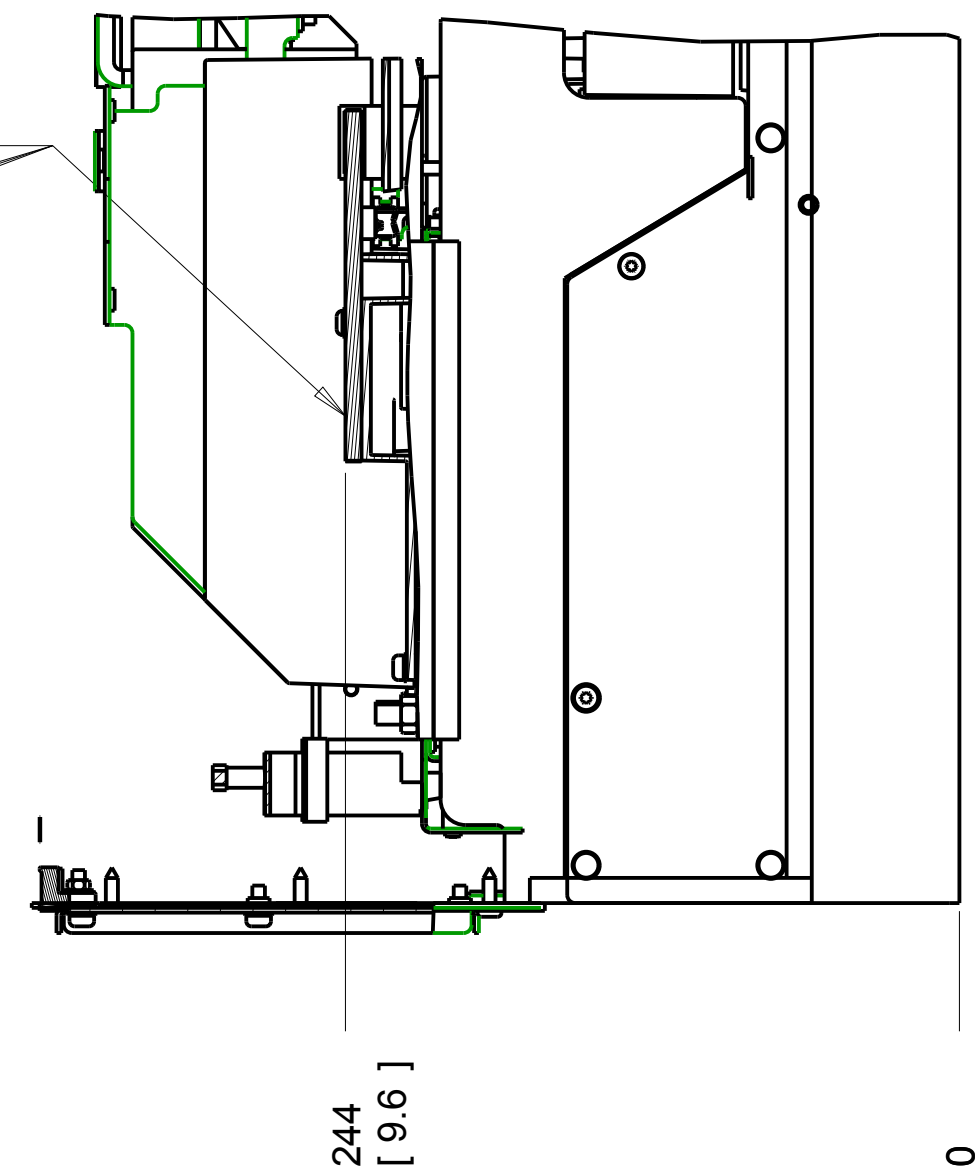
UNLESS OTHERWISE SPECIFIED INTERPRET DIM.AND TOL.PER ASME Y14.5M-1994 .X± 0.4 .XX 0.2 ∠ ± 0.5 DIM.ARE IN MILLIMETERS WEIGHTS ARE IN KILOGRAMS THIRD ANGLE PROJECTION	PROPERTIES		<div> 4401 N. BELL SCHOOL RD. LOVES PARK, ILLINOIS 61111 USA (815) 639-8600 FAX (815) 639-8000</div>			
	MATERIAL	N/A				
	FINISH	N/A				
	THICKNESS	N/A				
	EST.WEIGHT	62		TITLE INSTALLATION DRAWING, D1H, IP21/54		
APPROVALS	INITIALS	DATE				
DRAWN	CCN	06/17/11				
CHECKED						
ENGR						
			SIZE	MODEL	REV	
			C		001	
			SCALE	DRAWING NO.	SHEET	
		0.175	177R0374	1 OF 3		

SECTION A-A
MAINS TERMINALS

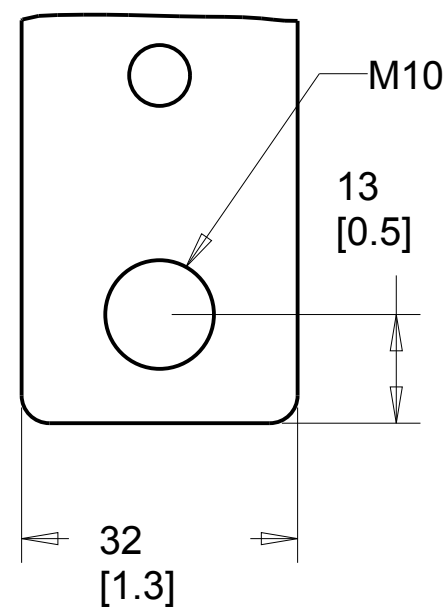
MAINS TERMINAL

200 [7.9]
3X M8X20 STUD
WITH NUTGROUND 88
[3.5]0
[0.0]

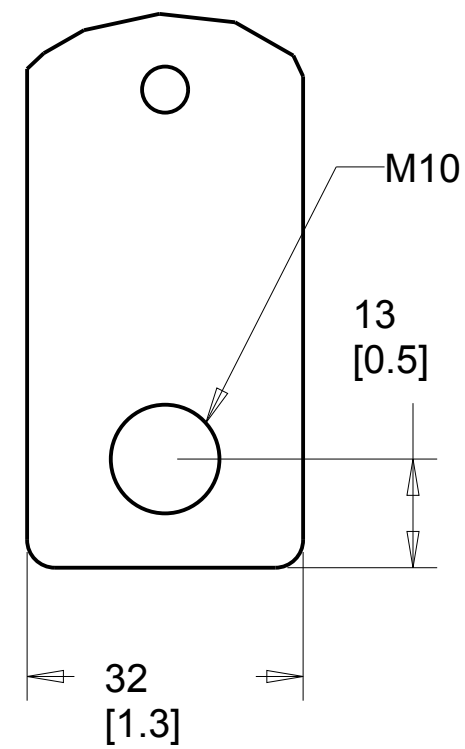
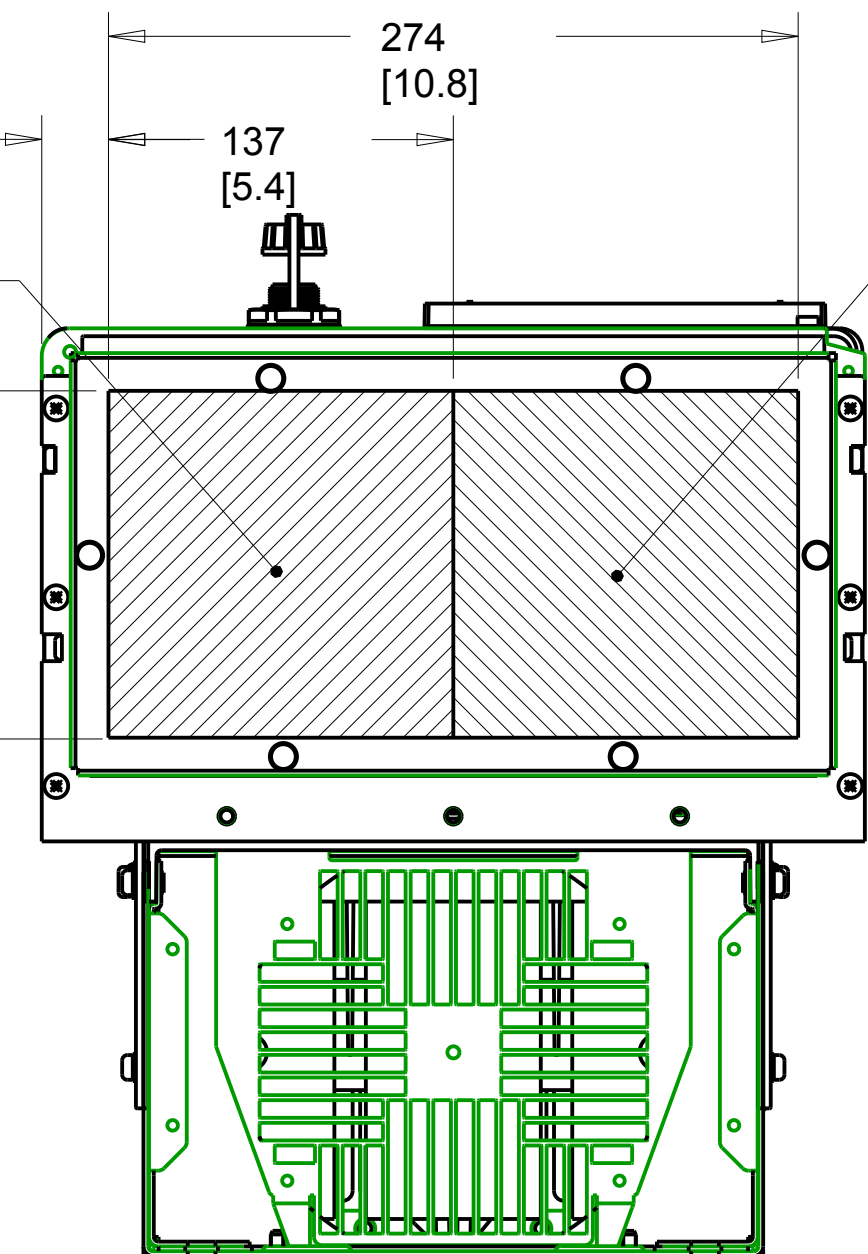
MOTOR TERMINAL

SECTION B-B
MOTOR TERMINALS

MAINS TERMINAL



MOTOR TERMINAL

27 [1.0]
MAINS SIDE
CABLE ENTRY138
[5.4]205
[8.1]

BOTTOM VIEW

MOTOR SIDE
CABLE ENTRY

NOTES:

1. PLACE CABLES THROUGH MARKED AREAS
2. 95 MM² (3/0 MCM) MAX WIRE SIZE

TITLE			
INSTALLATION DRAWING, D1H, IP21/54			
SIZE	C	MODEL	REV 001
SCALE	0.333	DRAWING NO.	SHEET 2 OF 3
		177R0374	

4		3		2		1																																											
D	THE TABLES BELOW MAY BE USED TO CONFIRM THE CORRECT FRAME SIZE AND DRAWING FOR A SPECIFIC DRIVE RATING (POWER AND VOLTAGE). THIS DRAWING IS FOR D1H FRAMES, THE TABLES BELOW IDENTIFY WHICH DRIVES ARE REPRESENTED BY THIS DRAWING.						D																																										
C	<table><tr><th colspan="6">KW RATED DRIVES</th></tr><tr><td>KW HIGH OVERLOAD</td><td>75</td><td>90</td><td>110</td><td>132</td><td>160</td></tr><tr><td>KW NORMAL OVERLOAD</td><td>90</td><td>110</td><td>132</td><td>160</td><td>200</td></tr><tr><td>400V</td><td></td><td>D1H</td><td>D1H</td><td>D1H</td><td></td></tr><tr><td>500V</td><td></td><td></td><td>D1H</td><td>D1H</td><td>D1H</td></tr><tr><td>525V</td><td>D1H</td><td>D1H</td><td>D1H</td><td></td><td></td></tr><tr><td>690V</td><td></td><td>D1H</td><td>D1H</td><td>D1H</td><td></td></tr></table>						KW RATED DRIVES						KW HIGH OVERLOAD	75	90	110	132	160	KW NORMAL OVERLOAD	90	110	132	160	200	400V		D1H	D1H	D1H		500V			D1H	D1H	D1H	525V	D1H	D1H	D1H			690V		D1H	D1H	D1H		C
	KW RATED DRIVES																																																
	KW HIGH OVERLOAD	75	90	110	132	160																																											
	KW NORMAL OVERLOAD	90	110	132	160	200																																											
	400V		D1H	D1H	D1H																																												
	500V			D1H	D1H	D1H																																											
	525V	D1H	D1H	D1H																																													
690V		D1H	D1H	D1H																																													
B	<table><tr><th colspan="5">HORSEPOWER RATED DRIVES</th></tr><tr><td>HP HIGH OVERLOAD</td><td>100</td><td>125</td><td>150</td><td>200</td></tr><tr><td>HP NORMAL OVERLOAD</td><td>125</td><td>150</td><td>200</td><td>250</td></tr><tr><td>460V</td><td></td><td>D1H</td><td>D1H</td><td>D1H</td></tr><tr><td>575V</td><td>D1H</td><td>D1H</td><td>D1H</td><td></td></tr></table>						HORSEPOWER RATED DRIVES					HP HIGH OVERLOAD	100	125	150	200	HP NORMAL OVERLOAD	125	150	200	250	460V		D1H	D1H	D1H	575V	D1H	D1H	D1H		B																	
	HORSEPOWER RATED DRIVES																																																
	HP HIGH OVERLOAD	100	125	150	200																																												
	HP NORMAL OVERLOAD	125	150	200	250																																												
	460V		D1H	D1H	D1H																																												
575V	D1H	D1H	D1H																																														
A							A																																										
4		3		2		1																																											
						<table><tr><th colspan="3">TITLE</th></tr><tr><td colspan="3">INSTALLATION DRAWING, D1H, IP21/54</td></tr><tr><td>SIZE</td><td>MODEL</td><td>REV</td></tr><tr><td>C</td><td></td><td>001</td></tr><tr><td>SCALE</td><td>DRAWING NO.</td><td>SHEET</td></tr><tr><td>0.175</td><td>177R0374</td><td>3 OF 3</td></tr></table>		TITLE			INSTALLATION DRAWING, D1H, IP21/54			SIZE	MODEL	REV	C		001	SCALE	DRAWING NO.	SHEET	0.175	177R0374	3 OF 3																								
TITLE																																																	
INSTALLATION DRAWING, D1H, IP21/54																																																	
SIZE	MODEL	REV																																															
C		001																																															
SCALE	DRAWING NO.	SHEET																																															
0.175	177R0374	3 OF 3																																															